

一、Install RFID tag and carbon tape

1、Put RFID tags into the paper bin



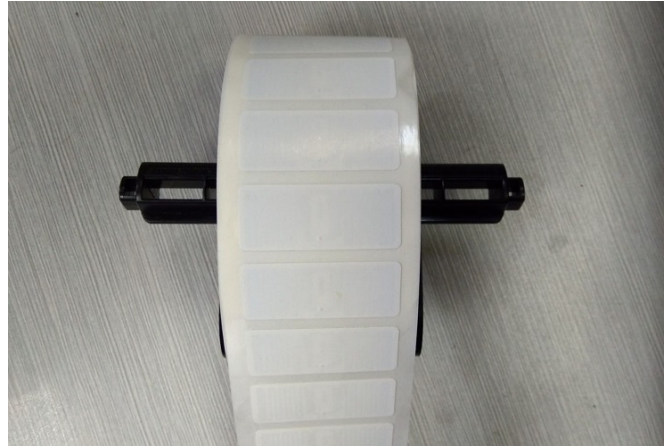
(1) Carbon belt accessories



(2) Clamp the paper reel sleeve on the baffle



(3) Hanging Paper



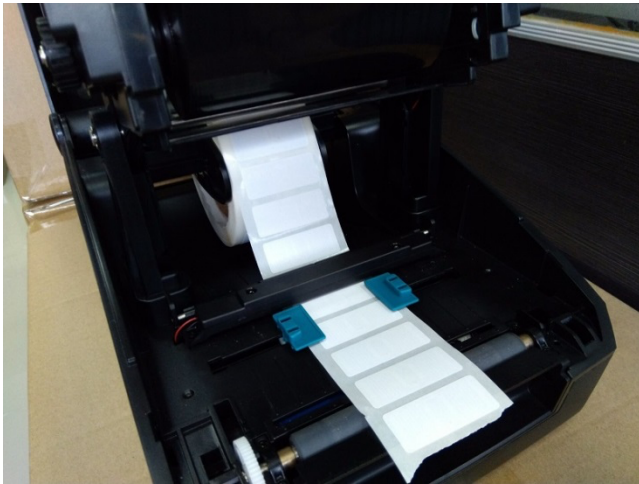
(4) Clamp paper



(5) Side view of paper roll installation



(6) Put the installed paper roll into the paper bin



(7) The label shall pass through the paper guide shaft, and the blue paper limiter shall be clamped



(8) Close the print head and complete the label installation

2、Using an external paper holder



If the paper roll is too large to fit in the printer paper bin, an external paper holder (optional) is required. The installation diagram is shown in the figure above

二、Connecting the printer to the computer

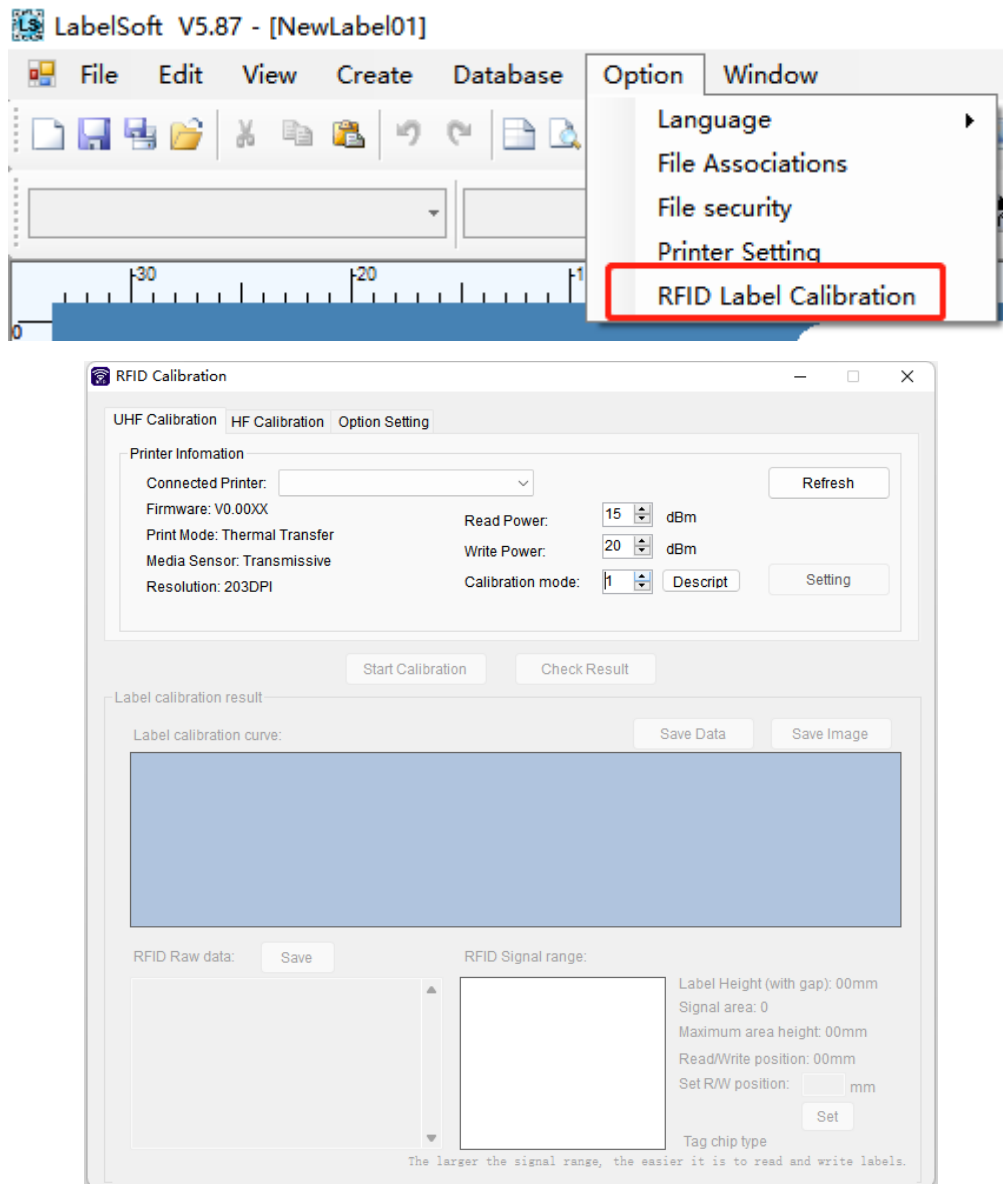
1、Install the label editing software LabelSoft

« LT-ZMPrinter » English » tool kit » LabelSoft				
名称	修改日期	类型	大小	
en	2022-11-7 15:33	文件夹		
zh-Hant	2022-11-7 15:33	文件夹		
LabelSoft.exe	2022-11-4 12:49	应用程序	5,147 KB	
LabelSoft.exe.config	2021-3-30 16:56	XML Configurati...	1 KB	
Readme.txt	2022-11-7 15:38	文本文档	1 KB	

LabelSoft is located in the LT ZMPrinter English tool kit LabelSoft directory. Run LabelSoft exe starts to use.

三、Calibrate RFID tags

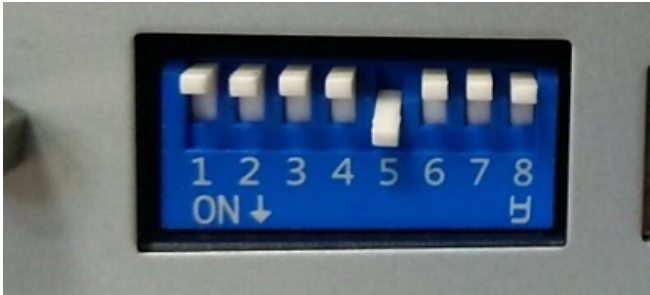
1、Run LabelSoft software, select "Settings" -> "RFID Label Calibration" in the menu, and open the visual label calibration tool



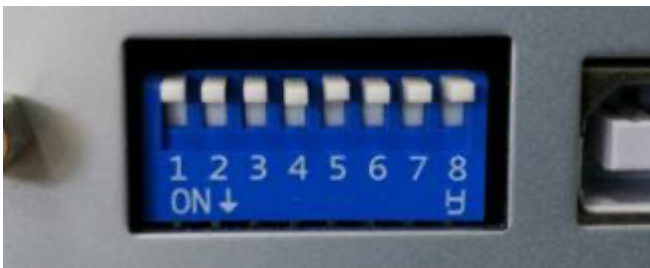
If the printer is used for the first time, it is recommended to use the calibration mode: 1, read power 15, write power 20. After the configuration is completed, remember to click "Change Settings"

Restart calibration after success

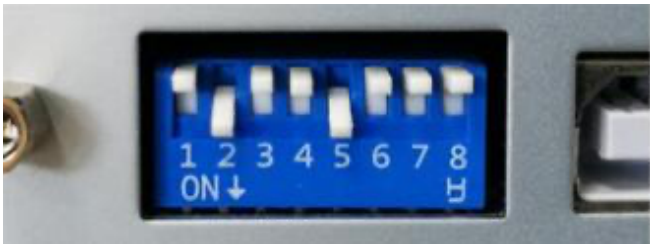
2、Printer DIP Switch Description



(1) Printing RFID tags using penetrating sensors



(2) Printing RFID tags using reflective sensors



(3) Print non RFID common labels using penetrating sensors

DIP switch setting description:

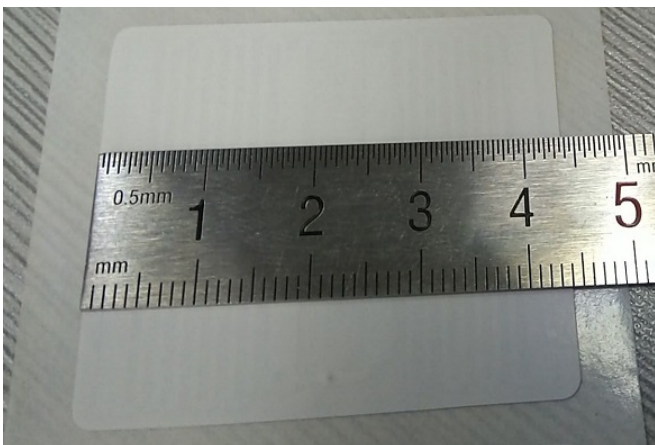
1. Turn off the carbon belt sensor in thermal mode; Turn on to enable the carbon belt sensor, thermal transfer mode.
2. Dial down to close the RFID module and print ordinary labels; Dial in to enable the RFID module and print RFID tags.
3. Please keep the cutter in the up position.
4. Please keep the paper stripper turned up.
5. Dial down to use penetrating inductor; Dial up to use the reflex sensor.
6. Network setting function, please keep dialing up.
7. Use with 8 to set the baud rate of the serial port. Please consult the technician for details.

be careful:

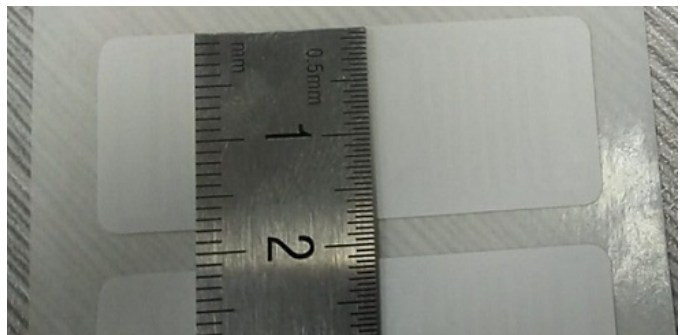
After changing the DIP switch, the printer needs to be turned on and off again.

四、LabelSoft Software Layout Example

1、Measure label size

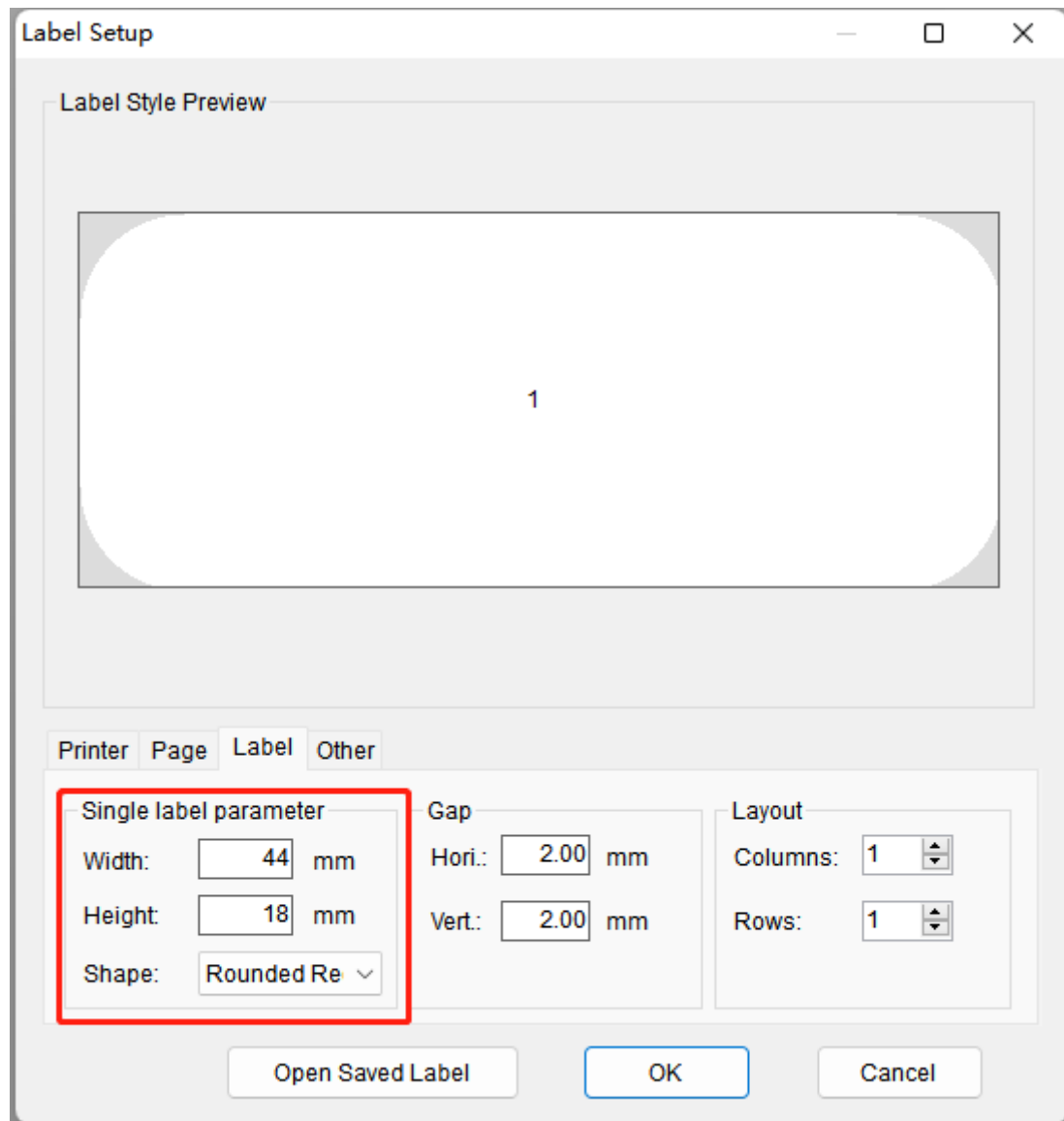


(1) The width of the label measured with a ruler is 44mm



(2) Height is 18mm

2、LabelSoft software sets the label size

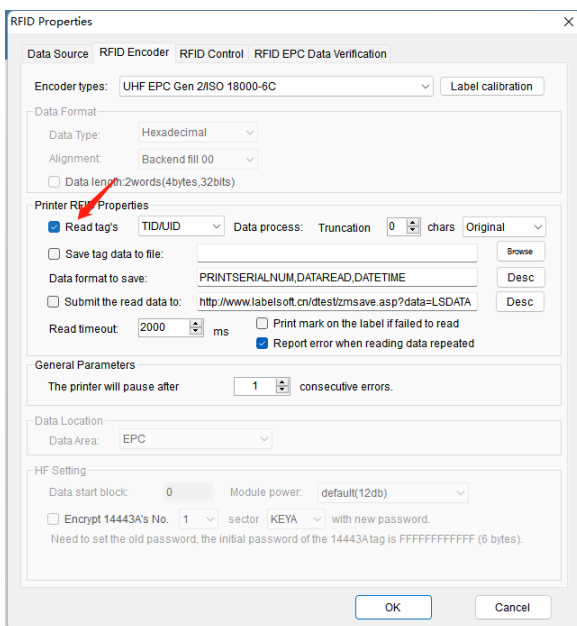


3、Add text, barcode and RFID objects to be printed

(1) Write RFID tag data while printing



(2) Read RFID tag ID and convert it into barcode to print on the current tag



Read RFID tag ID and convert it into barcode to print on the current tag

RFID Properties

Data Source RFID Encoder **RFID Control** RFID EPC Data Verification

Type	Data
TID	E2003412112233445...

Add Del Up Down

Substring Parameter

Data Type: Read UHF tag

Substring Data: 24
E20034121122334455667788

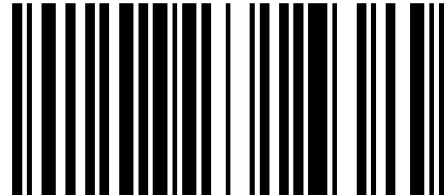
Substring Share Name:

Advanced Options

The Total String
E20034121122334455667788

OK Cancel

Read before write



0123456789